

SY870E

MINING EXCAVATOR

Rated power: 370kW/1490rpm
Operation Weight: 81500kg
Standard bucket capacity: 5m³



High reliability power system

Equipped with 6kV high voltage AC asynchronous motor, with high power, high torque, high efficiency, energy saving, environmental protection, safety and reliability.



Functional configuration

Optional automatic lubrication, equipped with multi-dimensional security monitoring system and other configurations, safe and simple operation, convenient maintenance.



Intelligent full electronic control system

The world's advanced double pump fully electric valve hydraulic system, to achieve intelligent flow and power distribution, adapt to various working conditions.



Mine intelligent technical support

Based on sensor closed-loop technology, intelligent assistance can be realized, and corresponding intelligent functions can be developed according to the needs of mine users.

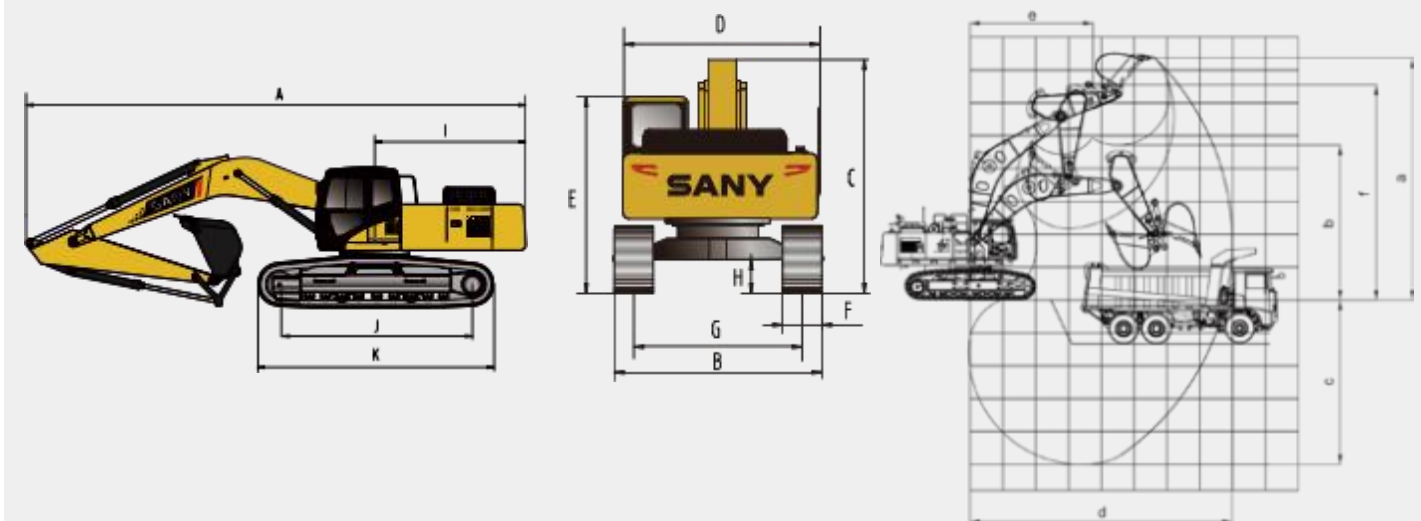
SY870E Electric excavator



Performance Parameter	SY870E
Weight kg	81500kg
Bucket capacity m ³	5
Power Kw/rpm	370/1490
gradeability	70% (35°)
Travel speed (H/L) km/h	4.5/2.9
Swing speed rpm	7.2
Bucket digging force kN	390
Arm digging force kN	366

Overall dimensions(mm)	SY870E
A. Overall length (Transportation)	13152
B. Under structure width	3430/4030
C. Overall height	5100
D. Upperstructure width	4480
E. Overall height (cab top)	3872
F. track shoe width	650
G. Track gauge	2780/3380
H. Min. ground clearance	892
I. Tail swing radius	4175
J. wheel track	4770
K. Under carriage length	5986

Operation range(mm)	SY870E
a. Max. digging height	11055
b. Max. unloading height	7051
c. Max. digging depth	7425
d. Max. digging reach	11986
e. Min. swing radius	5620
f. Max. height at min. swing radius	9811



Note: As technology is constantly updated and materials and technical specifications are subject to change without notice, the machines in the photos may include additional equipment.