

More features, more possibilities

Compact, efficient, high-powered fully electrical telehandler. Compact dimension, is perfect for working indoors or in other enclosed spaces urban or construction.



EFFICIENCY ON HIGHEST LEVEL

COMACTER. STRONGER. BETTER

MAIN FEATURES:

<div>5,000kg</div> <div>Operating mass</div>	<div>6 Meters</div> <div>Lifting height</div>	<div>1850mm</div> <div>Overall width</div>	<div>1920mm</div> <div>Height over cab</div>
<div>EU-III</div> <div>Emission standard</div>	<div>20-Hrs</div> <div>Working hours</div>	<div>12v</div> <div>System voltage</div>	<div>3350mm</div> <div>Turning radius</div>
<div>55kw</div> <div>Engine rating power</div>	<div>260Nm</div> <div>Engine max torque</div>	<div>25kph</div> <div>Travelling speed</div>	<div>2,500kg</div> <div>Capacity</div>

OPERATING COMFORT/CAB

- Ten-inch touchscreen display and encoder navigation
- Heater and air conditioning
- Radio with Bluetooth and microphone
- Adjustable seat with suspension
- 12 V power socket
- Sunblind, roof and front screen
- Heated rear screen
- Front, roof and rear wiper and washers
- Armrest with storage and USB charger
- Cup and bottle holders
- Fully adjustable steering column
- Intuitive keypad functions (all backlit)
- EVI Telematics

WORK EQUIPMENT

- Standard Sany Fast Fit carriage with 1200mm forks
- Other carriage with fork frame (optional)
- On board charger
- External 3 phase fast charge: optional
- Three steering modes: 4WS, 2WS and crab
- Fully proportional joystick
- Auxiliary hydraulic venting from cab

WORKING LIGHTS

- 7 x LED Working lights on cab and boom
- Full LED road lights
- Amber flashing beacon

SAFETY

- CE / UKCA-certified
- ROPS ISO:3471:2008 and FOPS ISO:3449:2005
- Screen and roof guard (optional)
- Reversing alarm
- Hi-viz seatbelt
- Integrated reversing camera and distance sensor
- Seat switch and green "ready" beacon
- Load weight monitoring
- Load moment Indicator display

*The air-conditioning system contains fluorinated greenhouse gases: Refrigerant type: HFC 134a, global warming potential: 1430, quantity: 65 kg, CO2e: 0.933 tonnes.

VERSATILITY AT THE HIGHEST LEVEL

Thanks to their compact design and three different steering modes, they can be perfectly positioned in even the tightest of spaces and bring heavy loads up to a lifting height of up to 6 metres. With their various attachment options.

A COMPREHENSIVE SAFETY PACKAGE AS STANDARD SAFETY

The ultimate view/High efficiency through high quality/Tested on the basis of day-to-day work/In the spotlight.

USER EXPERIENCE:AMPLE SPACE FOR AMPLE COMFORT

PRODUCTIVITY:SETTING THE BENCHMARK

EFFICIENCY:SAVE WHILE YOU DRIVE

TECHNICAL SPECIFICATIONS

OPERATING WEIGHT

kg 5000

PERFORMANCE PARAMETERS

Maximum lift capacity	kg	2500
Lift capacity at maximum height	kg	2000
Lift capacity at maximum reach	kg	800
Lift height	mm	6000
Maximum forward reach		3350
Carriage crowd angle	°	12
Carriage dump angle	°	117
Frame levelling +/-	°	NA
Outside turning radius (4WS)	mm	3350
Auxiliary hydraulic flow	l/min	80
Auxiliary hydraulic pressure	Mpa	27
Noise at driving position	Lpa	76
Noise to environment	Lwa	105

BOOM PARAMETERS

Boom (raise/lower)	sec	9.4/6.7
Boom (extend/retract)	sec	9.6/6

TYRES

Type/size	12-16.5
-----------	---------

ENGINE

Manufacturer		Kubota
Displacement	ltr	3.3
No. of cylinders		4
Power rating (@2200rpm)	kw (hp)	55 (74)
Torque rating (@1600rpm)	nm	289
Model		V3307-TE5AB-SNY-8

SERVICE REFILL CAPACITIES

Hydraulic system	ltr	70
Fuel tank	ltr	80

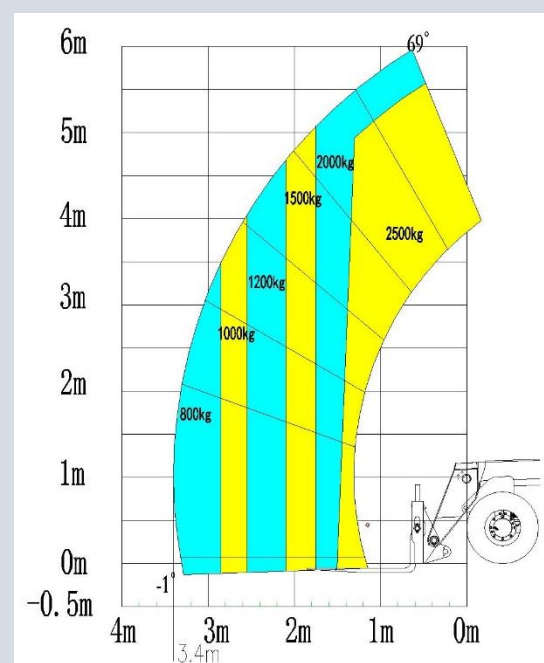
CABIN

Cabin is ROPS & FOPS tested & conforms to IOS 3471/3449

ELECTRICS

System voltage/Battery capacity	Volt/Amp	12/140
---------------------------------	----------	--------

STH625



TRANSMISSION

Transmission type	Hydrostatic
Transmission brand	Dana 3312
Axles	Dana 211
Number of forward gears	2
Number of Reverse gears	2
Max, travel speed	kph 25
Parking brake	SAHR
Service brake	Oil-immersed multi-discs

HYDRAULIC SYSTEM

Hydraulic pump type	Gear pump
Hydraulic pump manufacture	Cassapa
Hydraulic Manifold	Husco
System pressure	bar 270
Hydraulic flow	l/min 80

DIMENSIONS

Length to front of carriage	mm	4000
Overall width	mm	1850
Overall width stabilisers fully deployed	mm	NA
Height over cab without beacon	mm	1920
Height over cab with beacon	mm	2010
Wheelbase	mm	2390
Overall cabin width	mm	960
Ground clearance	mm	250
Turning radius over tyres	mm	3350
Operating mass (with Forks)	kg	5000

POINT LOADS

Machine loaded with models maximum capacity

Load per front tyre	3260 kg
Load per rear tyre	490 kg

Machine unloaded with boom in horizontal travel position

Load per front tyre	1200 kg
Load per rear tyre	1300 kg

