

 VERTU EQUIPMENT

**SANY**

Quality Changes the World



# POWERING THE FUTURE

PERFORMANCE, SUSTAINABILITY, INNOVATION



**BATTERY MATERIAL HANDLER**  
**SMHW40E**

Battery capacity  
507 kWh  
Main drive  
160 kWh  
Swing drive  
80 kWh  
Loading equipment  
15 – 17 m

# BATTERY MATERIAL HANDLER

- + High efficient drive modes
- + Less maintenance requirements
- + Fast charging with dual gun
- + Reduced noise level

Battery capacity  
**507 kWh**  
Main drive  
**160 kWh**  
Swing drive  
**80 kWh**  
Loading equipment  
**15 – 17 m**



## BATTERY

Type	Lithium ferrophosphate
Capacity	80 kW / 400 Nm
Warranty period	The attenuation in 5 years shall not exceed 30%
Full discharge cycles	>2800
Cooling mode	liquid
Continuous working time	6–8 h

## CHARGER

Charging duration	80–120 Minutes
Charging power	2x 150 kW/h

## ELECTRIC MOTORS

Main drive	160 kWh / 750 Nm
Swing drive	80 kWh / 400 Nm

## HYDRAULIC SYSTEM

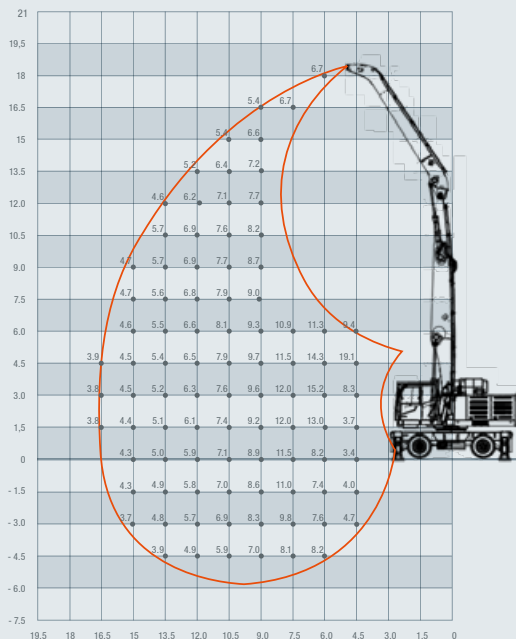
Hydraulic pressure	343 bar
Max. oil flow	1x 360 l/min, 1x 380 l/min
Filling quantity of the hyd. system	320 l
Swing speed	8 rpm

## CABINE

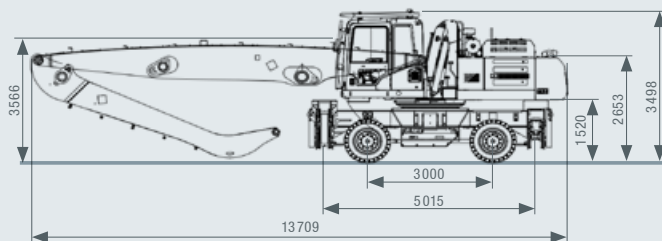
Lifting range	2650 mm
Eye level	5800 mm

## LOADING EQUIPMENT

Arm	Boom	Stick
15 m	8.9 m	6.5 m
17 m	9.8 m	7.5 m



Arm: **17 m**  
Boom: **9.8 m**  
Stick: **7.5 m**



Not all products are available in all markets. As part of our continuous improvement process, we reserve the right to modify specifications and designs without giving prior notice. The figures may contain additional options.



**Vertu Equipment**  
1800 837 888  
[www.vertuequipment.com.au](http://www.vertuequipment.com.au)  
[admin@vertuequipment.com.au](mailto:admin@vertuequipment.com.au)

Melbourne  
175 South Gippsland Highway,  
South Dandenong, VIC

