

SMHW80

SANY Material Handling Machine

SMHW80 series is large tonnage tire material handler, equipped with different arm combinations and grabbers, can be applied to the loading and unloading and stacking of bulk cargo and other goods in the dock and yard.



▶ 1

High load

a single cycle takes only 30 seconds, a single grab capacity reaches 9 tons, loading and unloading operations can be up to 800tons/h, easily covering 10,000 tons of ship operations.

▶ 2

Wide range

maximum operating depth is 14 meters, maximum operating height reaches 23 meters, maximum operating radius is 24 meters.

▶ 3

Low energy consumption

The application of energy recovery technology, the boom system adopts multi-body dynamics simulation design, energy-saving efficiency of more than 20%.

▶ 4

Full coverage

12meters amplitude load capacity of more than 15 tons, covering more than 90% of the lifting needs of general cargo, replacement of attachments, a multi-purpose machine.

▶ 5

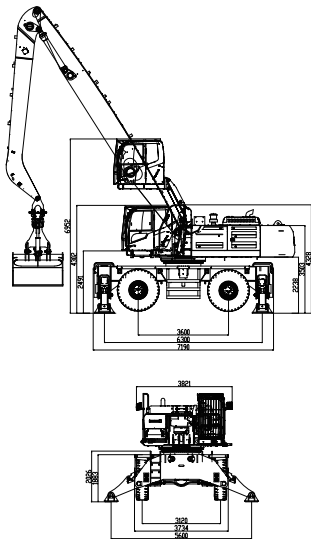
More flexible

tire type chassis makes transition more convenient.

► Product Parameters

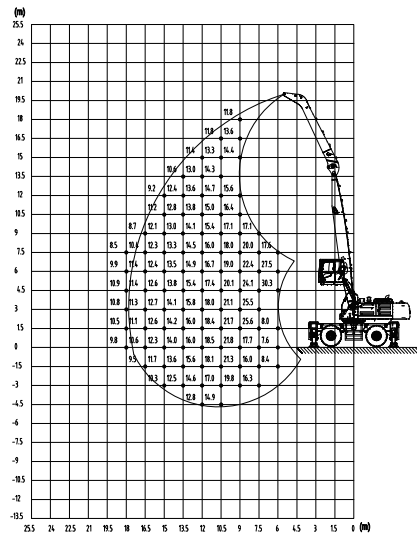
Technical Parameter				Configuration Parameter							
ITEM		UNIT	SMHW80	CONFIGURATION		UNIT	SMHW80				
Power System	Engine	Model	-	Deutz D09S4T9	Slewing Gear	Slewing Bearing	-	Sany			
		Rated power	kw/rpm	260/2000		Max. Rotating Speed	rpm	8			
		Torque	Nm/rpm	1530/1200-1400	Cabin	Cabin Lift Height	mm	2650			
		Emission	min	com III		Basic Parameters	Boom Configuration	m	18	20	22
	Oil Tank Capacity	L	600	m	Boom 10.5			Boom 12.5	Boom 12.5	Boom 13	
	E-Motor	Model	-	Sany YE3-355M-4	m			Stick 7.5	Stick 7.5	Stick 10	Stick 11
		Rated Capacity	kw/rpm	250/1486	Max. Operating Radius			m	18	20	21
		Input voltage	V,Hz	380,50	Max. Operating Height	m	18	20	21	24	
	Type Of Start	-	Soft Start	Max. Operating Depth	m	-4.5	-4.5	-7	-10		
Chassis System	Track width	mm	3135	Basic Parameters	Max. Operating Radius (Grab Not Included)	t	9	5	6	5	
	Wheel base	mm	3600								
	Support width(lengthways)	mm	6300								
	Support width(crosswise)	mm	5600								
	Turning radius	mm	9800								
	Max. Gradeability	%	20								
	Max. Travelling Speed	km/h	10								
Hydraulic System	Type Of Control	-	Electronically Controlled Positive Flow System								
	Main Pump	Model	-	Hengli							
		Rated Flow	L/min	2×400							
	Main Valve	-	Hengli								
	Reducer	-	Sany								
	Boom Cylinder	-	Sany								
	Stick Cylinder	-	Sany								
	Max. System Pressure	MPa	34								
Hydraulic Oil Tank	L	500									

► Dimensions



► Scope Of Work

SMHW80 Lift capacities of material handler
(Boom10.5m, Stick7.5m, Unit-t)



SMHW80 Lift capacities of material handler
(Boom13m, Stick11m, Unit-t)

