

### Standard & optional Configurations

	Standard	Optional
Air cleaner	Vortex	Oil bath
Mouldboard	14R(4270mm)	12R(3640mm)
Blade thickness	19mm	25mm
		25mm+wear rib
Others	FOPS/ROPS hexahedron cab Cab pressurization Blade buffering Blade adjustment float Emergency steering Dual joysticks Intelligent and reverse fan Backup camera Ground emergency stop Seat sensor and belt indicator Openable tail cover Transmission protect cover Front counter weight Rear scarifier Wheel chocks Air suspension seat 17.5-25 vacuum tire	Auto lubrication Front dozer All wheel drive Outside mirror heated Blade 2D/3D leveling system Auto lubrication system Cab front windshield protector



# GRADER SMG260

HEAVY-HAUL ALL-ROUNDER

### Technical specifications

Module	SMG260	
Engine	Engine model	Cummins OSC 8.3 (T3)
	VHP	194 kW
	Displacement	8.3 L
	Speed @ rated power	2200 rpm
	Maximum torque	1135 N·m
	Torque rise	35%
Power Train	Fuel tank	400L
	Forward / reverse gears	8 forward / 6 reverse
	Transmission	Direct drive, Power shift
	Brakes - parking	Hydraulically actuated, multiple oil-disc
	Maximum speed - forward/reverse	49.6 / 39.1 km/h
	Turning radius, outside front tires	7.55 m
	Steering range - left/right	41.0 Degrees
Structures	Articulation angle - left/right	24.5 Degrees
	Front axle - total oscillation	32 Degrees
	Circle - diameter	1520 mm
	Front axle - height to center	645 mm
	Front axle - wheel lean, left/right	26 Degrees
	Tandem width	215 mm
Operating weight	Tandem oscillation - front up / down	15 / 25 Degrees
	No attachments	17910kg
	Scarifier and front counter weight	20100kg
Hydraulic system	Circuit type	Load sensing, proportional priority pressure compensating system
	Maximum implements system pressure	25 Mpa
	Implements system Standby pressure	3.2 Mpa
	Implements pump output	231 L/min
	Maximum fan system pressure	21 Mpa
	Fan motor / maximum rotate speed	Gear motor / 1850 rpm
Blade	Hydraulic tank capacity	140 L
	Blade width	4270 mm
	Moldboard - height	610 mm
	Moldboard - thickness	22 mm
	Throat clearance	120 mm
	Moldboard sideshift - right / left	662 mm / 630 mm
	Maximum blade position angle	90 Degrees
	Blade tip range	43 Degrees
	Maximum shoulder reach outside of tires - right / left	2070 mm / 2110 mm
	Maximum lift above ground	488 mm
Dimension	Maximum depth of cut	1236 mm
	No attachments	9315mm×2731mm×3508mm
	Scarifier and front counter weight	10677mm×2731mm×3508mm



**SANY HEAVY INDUSTRY CO., LTD.**

SANY Industrial Park, Economic and Technological Development Zone,  
Changsha, Hunan, China, 410100

Sales Hotline

Tel: 0086-731-85835199

Mail: sales@sanyglobal.com

Service Hotline

Tel: 0086-4006098318

Mail: CRD@sany.com.cn

The product configuration (including technical parameters) is subject to change and the delivered actual machine without notice.

The copyright is owned by Sany Heavy Industry. Without the written consent of Sany Heavy Industry, any part of the contents shall not be copied or translated for any purpose.

Designed and made by the Market Department of Sany Heavy Industry in Mar. 2023.

® Registered trademark, counterfeiting banned: Sany Heavy Industry Co., Ltd. All rights reserved.

“SANY” and “SANY” logos are the trademarks or registered trademarks of Sany Heavy Industry Co., Ltd. in the world. Without the written consent of Sany Heavy Industry Co., Ltd., any person shall not use the trademarks.

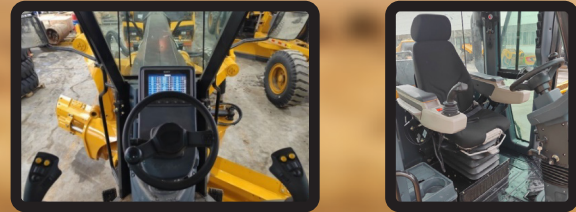
© Printed in China Date: Mar. 2023

www.sanyglobal.com

# Grader SMG260

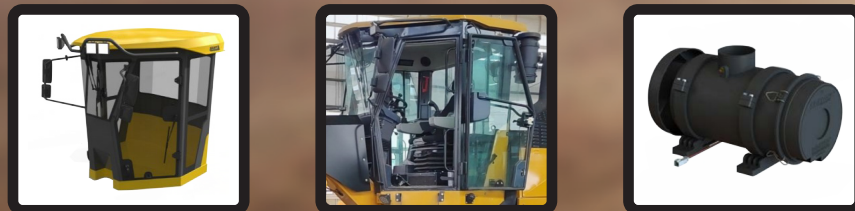
## 1 Comfortable driving and operating

- ◆ Fully sealed silent hexahedron cab provides a quiet and clean driving environment. Wide driving vision and excellent blade operating vision.
- ◆ Air suspension seat with 180mm buffer stroke, 50~140kg weight range of seat can be adjusted by one button, armrest horizontal and vertical direction can be adjusted, wide range angle of 32° console and 18° display can be adjusted, electronic hand throttle, above to meet the adjustment of operator different posture to relief fatigue of the long-term driving.
- ◆ Heavy truck interior design, cold and warm memory and self-starting air conditioner, car refrigerator space, dual joysticks, potential knob, silicone button, seat heated, to ensure high comfort, low control intensity in driving and control feeling.
- ◆ Dual steering mode of steering wheel and joystick to meet different needs and conditions.



## 2 Safety first

- ◆ FOPS/ROPS certified mining cab.
- ◆ Starter isolator, seat belt indicator, seat sensor, implements lock and other redundant conditions to prevent false start and false action to protect personal safety.
- ◆ Emergency stop buttons of in-cab and out-cab, emergency steering system of front wheels, wheel chocks, backup camera, ladder lights, troubles self-diagnosis, etc., Escort the safety of operators and machine.
- ◆ The pressurization system meet the CE and AIOH same time, effective filtration of harmful gases, asbestos/quartz dust, oil particles, dust, etc., to ensure operator safety and avoid pneumoconiosis hazards.



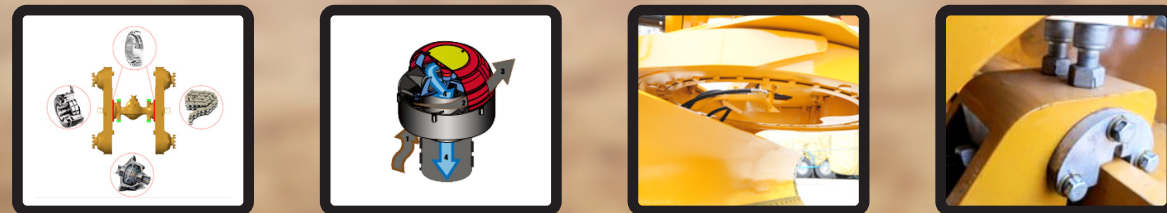
## 3 Exceed-expectation of traction, strong rigidity of powertrain

- ◆ Cummins engine of QSC 8.3, 260HP in T3, 8.3L displacement with 1135N.M maximum torque and 35% torque rise, the australia's mainstream choice.
- ◆ Direct drive transmission, it's a muscular machine with rapidly response power transmission and high efficiency, mature application in the north american market, so good to meet load fluctuation conditions of and in line with the australian market demands.
- ◆ Three air filters, three oil filters and four throttles makes more full combustion, intake and scavenging more thorough.



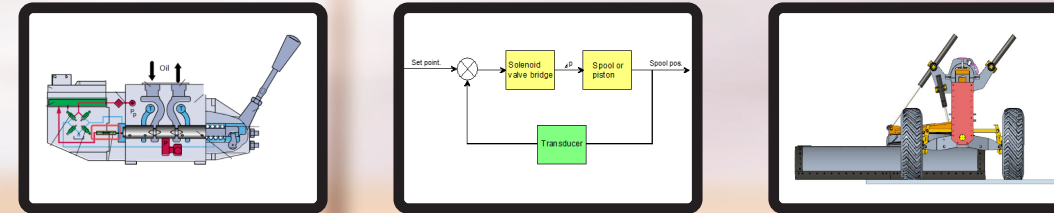
## 4 Reliable and durable

- ◆ The safe and reliable of heavy duty rear axle: fully sealed slewing bearing, larger wheel bearing, thicker sprocket shaft, heavy chain, integral wheel rim, wet brake, NO-SPIN silent differential lock. The heavy load protection gear
- ◆ box and blade buffering automatic obstacle crossing can reduce the impact effectively failure of key parts under large load conditions.
- ◆ The air centrifugal prefilter equipped with the vortex dust removal technology and there is no need to clean and maintenance, so effectively to prevent more than 20um particles into the air filter and increased the air filter life by 3 times.
- ◆ The fully enclosed roll-disc operating device dose not afraid of sand and stone, it has high rotation accuracy and do not need frequent maintenance, and no wearing parts.
- ◆ Chassis armor and mining grade covering, etc., Can resist the harsh working environment effectively.
- ◆ The adjust wear plate of blade chute can compensate the wear and shake of the blade that caused by blade side extension in long term, and it also will improve the service life and construction effect of the blade.



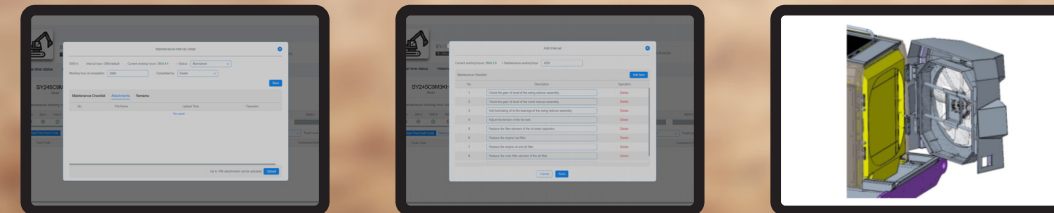
## 5 High working efficiency

- ◆ CAN valve equipped with spool displacement sensor, the closed circuit system compensates the impact of flow and pressure, changes of temperature and viscosity, voltage changes and changes of output flow by other factors, and ensures that the joysticks and blade realize the linear control to achieve fast, accurate and stable control of blade and reach the blade wherever you want.
- ◆ CAN-bus closed circuit control of electric proportional multiway valve and joysticks equipped with load sensitive hydraulic system to achieve 99.5% control accuracy of joystick-blade, high efficiency on construction.
- ◆ The left side of the blade can cover 2.12m, the right side can cover 2.1m, and the working range of the blade is more larger.
- ◆ For the high temperature environment in Australia, the optimized coolant power distribution of the radiator and the intelligent fan of the cabin partition can dissipate the heat accurately, more economy.



## 6 Easy to maintenance

- ◆ **Keep an eye on machine:** ① Tracking the completion status of maintenance intervals. ② Upload photos and invoices to record maintenance. ③ Add custom maintenance intervals to track additional services. ④ Remote lock and unlock your machine.
- ◆ **Easy maintenance:** ① For the conditions of heavy dust and dry grass in autumn and winter in australia, it is equipped with open tail cover, anti-foreign net of radiator/condenser and automatic reversal fan to improve the maintenance convenience of radiator system. ② The centralized arrangement of hydraulic and fuel filters and ground drain/refueling ports to improve maintenance efficiency. ③ The battery charging port and repair lamp and maintenance platform get more convenient and helpful in troubleshooting.



## 7 Intelligent manager

- ◆ **Intelligent diagnosis:** The third-generations of 7 inch LCD touch screen with high intelligent human-computer interaction and centralized display of fault alerts, engine speed, machine speed, fuel level, all system temperature and pressure, gears, etc.
- ◆ **Overview with absolute clarity:** ① Fully customizable data widgets for your fleet, precise machine location and automatic, action panel give you a quick view of triggered alarms, realtime faults, and machines have upcoming maintenance. ② List all machine in the fleet and their current status.
- ◆ **Detailed data of a single machine:** ① Show machine's basic information, working hour statistics, historical locations trajectory, detailed operational data and historical operational data analytic, list of machine's maintenance milestones, real-time and historical fault information. ② Tracking the completion status of maintenance intervals. ③ Upload photos and invoices to record maintenance. ④ Add custom maintenance intervals to track additional services.
- ◆ **Geofence alarm & working out alarm:** ① Set geofence for a single machine or a group can be set to trigger when entering or leaving the area. ② Set working hours for a single machine or a group. And trigger the alarm when a machine operates outside of working hours. ③ Get alarm notifications on website, mobile app or email.

