



WHEN AGILITY COUNTS

SMALL. POWERFUL. FOR EFFICIENCY IN THE SMALLEST OF SPACES.

CONSTRUCTION MACHINERY



MINI EXCAVATORS **SY26U**

Engine
YANMAR 3TNV80F
Rated power
15.2 kW / 2500 rpm
Bucket capacity
0.06 m³
Operating mass
2760 kg

SANY

SY26U

For challenging tasks, you need a first-class partner

Quality comes from experience. And from new ideas. This is why we combine these two crucial factors at SANY. This is because we are one of the world's leading producers, having sold more than **250 000** excavators in **10 years**. This means that you can always rely on sophisticated products that have been tried and tested in practice. An impressive **5–7%** of our annual turnover is dedicated to research and development. This is why we give you not only our word, but also our extraordinary **five-year warranty** as a guarantee of how powerful and robust our products are.

250 000
EXCAVATORS SOLD IN
10 YEARS

5–7%
TURNOVER FOR RESEARCH
AND DEVELOPMENT

FIVE-YEAR
WARRANTY*

Quality Changes the World

* Applicable in certain markets, please check with your local dealer.



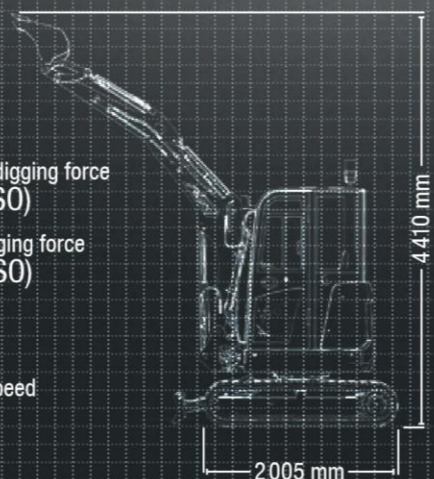
SY26U HARD FACTS

Max. bucket digging force
27.9 kN (ISO)

Max. arm digging force
14.2 kN (ISO)

Swingspeed
10 rpm

Max. travel speed
4.5 km/h



THE MOST COMPACT COMBI- NATION OF PERFORMANCE AND FUNCTIONALITY

The „small“ machines from SANY have always been among the greatest when it comes to cost effectiveness and efficiency – it's no different for the new SY26U mini excavator. It's in its element wherever it can demonstrate its speed and power, even in confined spaces. Its manoeuvrability and extremely precise control are also impressive in road

construction, horticulture and landscaping. The new small model shows its strengths even when just travelling to the workplace, as its comparatively low weight and compact dimensions allow for fast and safe loading and unloading. The SY26U is also available with cab or as a canopy version.*

* The following texts in the brochure refer to both the cabin version and the canopy version of the SY26U.

ECONOMY

FOR INTELLIGENT MINDS – PRODUCTIVITY MADE SIMPLE

The new SY26U boasts a whole host of properties that allow you to make crucial savings. These include, for example, the advanced load-sensing hydraulic system designed to improve speed and performance whilst simultaneously reducing fuel consumption.

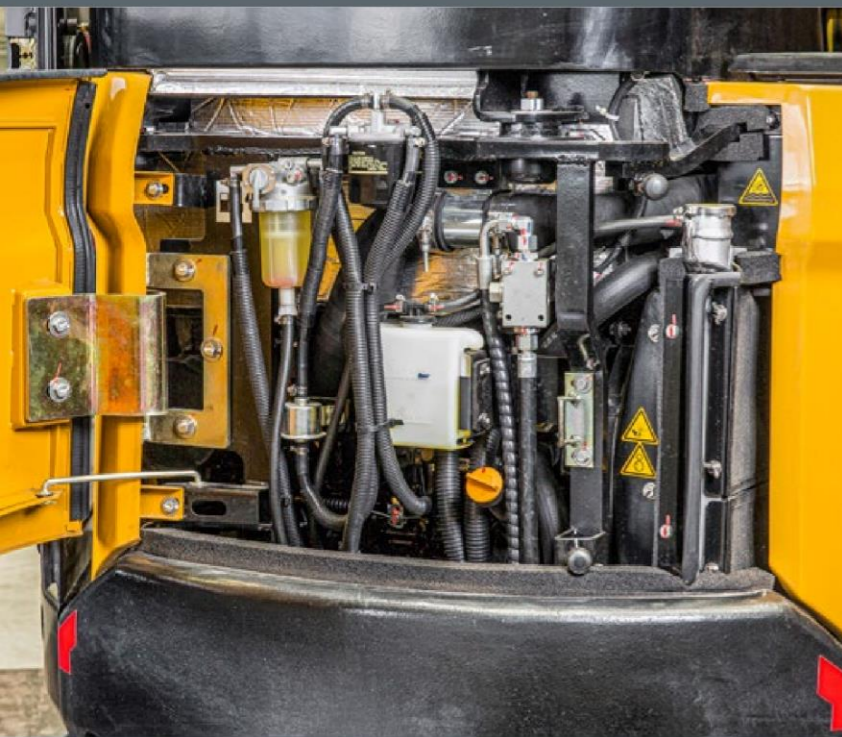


DIMENSIONS

If you want to set your sights high, you will have to dig down deep

You won't reach your limits in a hurry with the new SANY mini excavator. The robust boom design and carefully considered weight distribution allows a maximum horizontal reach of 4850 mm, a maximum vertical reach of 4410 mm and an excavation depth of 2820 mm.

Its structure as a short-tail-swing machine ensures that it can work well and quickly even on construction sites where space is tight.



Absolute reliability – for peace of mind!

SANY's five-year warranty* gives you the assurance that you can fully count on your equipment.

* With participating partners

QUALITY

Robust reliability – even the small models from SANY can work powerfully, meaning that it must be able to withstand enough. This is why they are build and machined solidly from the ground up, for example with highly-precise robot-welded seams, for example.

USER EXPERIENCE

Always making work easier – everyday work can be demanding for the excavator operator. We make it all a bit easier, for example, thanks to the comfortable air-suspension seat or the large high-resolution colour monitor.

DIMENSIONS

Small powerhouse – with its compact dimensions and manoeuvrability, the short-tail-swing excavator can do its job best where space is tight, and the smart swivel bracket solution lends it increased agility.



QUALITY

Robustness included. And a five-year warranty

From the choice of materials and the design, right through to the workmanship, durability and robustness is a priority for all SANY mini excavators. They have been tried and tested time and again in tough practical applications. For example, all cladding parts are made solely of sheet metal, which makes them particularly long-lasting and easy to repair when necessary. And the five-year warranty gives you the peace of mind that you can fully count on your equipment.

Cleverly thought out – even when the cab doors are open, they still fit within the machine's turning radius.



SAFETY

Inherently safe – the SY26U is equipped with numerous safety details as standard. These include lockable covers and a battery disconnection switch, and the cylinder protection on the boom.

COMPONENTS

Improved details – good visibility is the foundation for good work. Powerful LED work lights illuminate the work area evenly. The YANMAR drive unit also impresses thanks to its reliability and power.

ECONOMY

Cost effectiveness as a benchmark – the efficient load-sensing hydraulic system controls the variable flow rate of the piston pumps, thereby guaranteeing sufficient power to carry out all operations smoothly and safely, as only the required power is provided.



USER EXPERIENCE

Convenient maintenance is at the top of the agenda thanks to rear access

The wide-opening engine bonnet and the clear arrangement of the key components in the centre make maintenance and service quick and easy; the air filter, water separator, oil dipstick and oil filler neck are especially easy to reach.



SAFETY

Operating excavators by sight – truly impressive

A good view of outside is indispensable if you are to perform your work accurately and quickly. The SY26U's cab offers the operator a wide field of view, allowing them to keep an eye on all areas and work steps. The entire work area can be controlled with ease thanks to the large front, side and rear windows, without the driver having to get out of their seat. If work on a construction site takes a little longer, the LED headlights illuminate everything perfectly. Further advantages of this system include its low energy consumption and a much longer service life.



Our highlights – the added benefits SANY offers you:

- + Two auxiliary proportional control circuits as standard
- + Quiet and low-vibration engine
- + Large monitor
- + Efficient load-sensing hydraulic system
- + Responsive, precise control
- + LED work lighting
- + Air-suspension seat
- + Clear displays
- + Optimal visibility on all sides
- + ROPS/FOPS-certified for safety in operation
- + Cab or canopy version



USER EXPERIENCE

TOP MARKS FOR YOUR NEW WORKPLACE

Safety, comfort, ergonomics... this cockpit has everything you need to make your day-to-day work more convenient and simple. This starts when you enter the cab, which you can do comfortably and safely. And after that? Handling is simply effortless. Not only because the interior has a carefully considered ergonomic design but also because it offers you a lot of scope to respond. It is also convenient and comfortable thanks to the perfectly designed ventilation system and full seating comfort, due to the seat suspension. In addition, all displays can be read effortlessly on the large, high-resolution colour screen, while the wide field of view provides you with perfect visibility on all sides.

The two auxiliary control circuits allow the adaptation of various attachment devices. This means tilt buckets can also be attached in addition to the backhoe, in the case of fully integrated control. As two auxiliary control circuits are available, operating gripper tongs is no problem at all; the gripper tongs can be turned using one side of the joystick, and can be opened and closed using the other. Of course, it is also possible to operate a hammer, thanks to the standard hammer valve. This means you and the machine can be ready for any application.

ECONOMY

SY26U CANOPY: OPEN TO MORE OPTIONS

Same technology, same performance – the SY26U is also available as a canopy version. With a perfect view outside of the work area and, of course, with safety precautions in accordance with the current safety directives.



ENGINE

Model	YANMAR 3TNV80F
Typ	Water-cooled three-stroke diesel engine with turbulence chamber fuel injection
Exhaust emissions	Stage V
Rated power	15.2 kW / 2500 rpm
Max. torque	65.6 Nm / 1793 rpm
Displacement	1267 ccm
Batteries	1 × 12 V / 60 Ah

HYDRAULIC SYSTEM

Mainpump	Variable displacement axial piston pump
Max. oilflow	81 l/min
Max. oilflow (AUX 1)	42.5 l/min
Max. oilflow (AUX 2)	42.5 l/min
Travelmotor	Variable displacement axial piston motor
Rotation device	Axial piston motor with parking brake

SERVICE REFILL CAPACITIES

Fuel tank	34 l
Engine coolant	4.1 l
Engine oil	3.4 l
Drive (per side)	0.6 l
Hydraulicsystem	45 l
Hydraulic oil tank	30 l

PERFORMANCE

Swingspeed	10 rpm
Max. travel speed	High 4.5 km/h, slow 2.6 km/h
Max. travel force	20 kN
Gradeability	0.06 m³
Bucket capacity	0.26 kg/cm²
Groundpressure	25°
Bucket digging force ISO	27.9 kN
Arm digging force ISO	14.2 kN

OPERATING MASS

SY26U	2760 kg
SY26U Canopy	2700 kg

UNDER AND UPPER STRUCTURE

Boom length	2100 mm
Arm length	1300 mm
Bottomrollers	3
Rotation device	Axial piston motor with planetary gear running in oil bath and single-row slewing ring. Spring-loaded slewing gear parking brake, hydraulically released.
Undercarriage	Reinforced lower structure with larger dimensions. Welded drive frame in box design made of special material. Side frame welded to the drive frame.

RELIEF VALVE SETTINGS

Implement circuit	245 bar
Swing circuit	196 bar
Travel circuit	245 bar
Pilot pressure	35 bar

LIFTING CAPACITIES OF LOWER DOZER BLADE

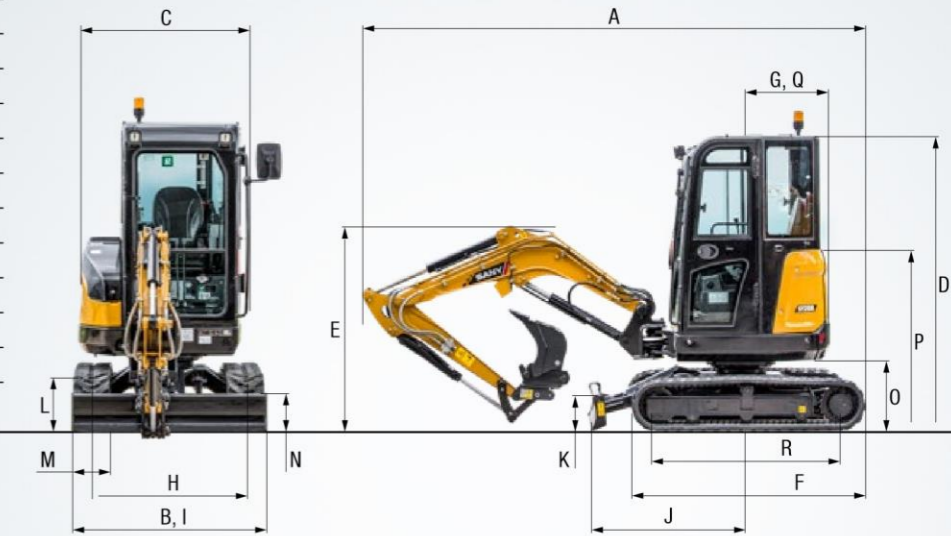
Load point height	Radius				Digging reach				
	2,0 m	3,0 m	4,0 m	Max.	mm				
4,0 m kg	[Diagram]				693	584	2590		
3,0 m kg	[Diagram]				540	365	3550		
2,0 m kg	707	459	501	282	493	282	4000		
1,0 m kg	937	421	717	274	507	256	4180		
Ground line kg	1521	715	1095	398	732	267	582	263	4045
- 1,0 m kg	1807	722	1012	395			730	316	3560
- 2,0 m kg	883	786					609	576	2420

LIFTING CAPACITIES OF UPPER DOZER BLADE

Load point height	Radius				Digging reach				
	2,0 m	3,0 m	4,0 m	Max.	mm				
4,0 m kg	[Diagram]				693	584	2590		
3,0 m kg	[Diagram]				438	365	3550		
2,0 m kg	549	459	340	282	340	282	4000		
1,0 m kg	515	421	332	274	310	256	4180		
Ground line kg	910	715	488	398	324	267	320	263	4045
- 1,0 m kg	917	722	485	395			385	316	3560
- 2,0 m kg	883	786					609	576	2420

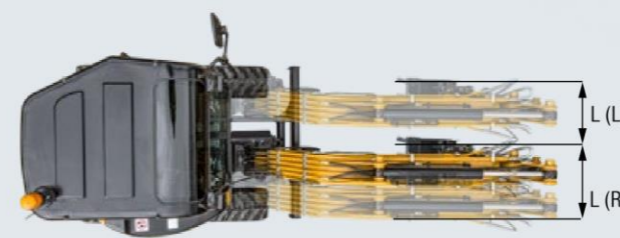
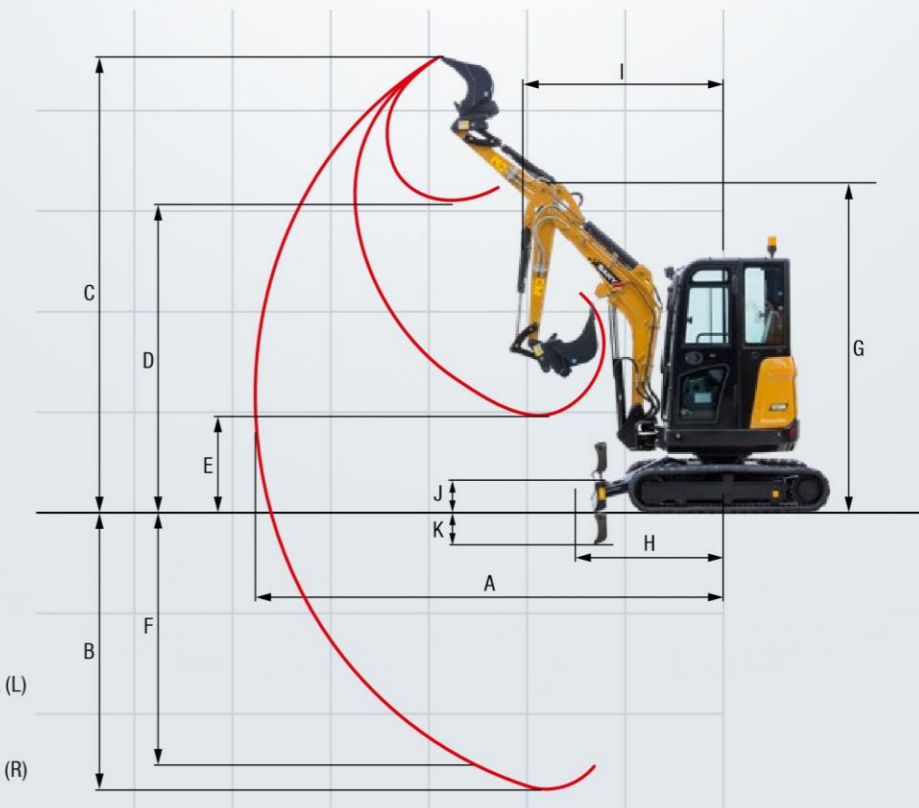
DIMENSIONS (TRANSPORT)

A Transport length	4285 mm
B Transport width	1550 mm
C Upperstructure carriage	1375 mm
D Height over cabin/ROPS	2430 mm
E Height of Boom – transport	1620 mm
F Overall length of crawler	2005 mm
G Tail length	775 mm
H Track gauge	1250 mm
I Undercarriage width (blade)	1550 mm
J Horizontal distance to blade	1295 mm
K Blade height	300 mm
L Track height	445 mm
M Track pads width	300 mm
N Min. ground clearance	290 mm
O Counterweigh clearance	555 mm
P Engine cover height	1460 mm
Q Tail swing radius	775 mm
R Center distance of tumbler	1560 mm



WORKING AREA

A Max. digging reach	4850 mm
B Max. digging depth	2820 mm
C Max. digging height	4410 mm
D Max. dumping height	3100 mm
E Min. dumping height	940 mm
F Max. vertical digging depth	2585 mm
G Overall height over arm by min. swing radius	3200 mm
H Arm head distance with work equipment retracted as far as possible	1490 mm
I Swing radius by max. boomswing (L)	1760 mm
Swing radius by max. boomswing (R)	1795 mm
Min. swing radius	2110 mm
J Max. clearance when blade up	360 mm
K Max. depth of blade down	380 mm
L Offset boom (L)	765 mm
Offset boom (R)	508 mm
Max. boom-swing angle (L)	67°
Max. boom-swing angle (R)	45°



Powerful and mobile – the SY26U is well-equipped by its very nature!

It has everything it needs to become an indispensable aid. Its impressive properties include not only its power and endurance, but also the precise response characteristics of all the components thanks to the sophisticated hydraulic system. Outstanding performance for a fair price: That's what we call cost-effective.



OPERATORS COMFORT / CABINE

Heater	●	
Radio and speaker	●	
USB Socket (music)	●	
Armrests (adjustable)	●	●
12v outlets	●	●
Wiper	●	
AUX 1 on Joystick	●	●
AUX 2 on Joystick	●	●
Suspended seat	●	●
8 stored hydraulic settings for attachments	●	●
Removable front-window	●	

SAFETY

Battery master switch	●	●
Travel Alarm	●	●
Beaconlamp	●	●

WORKING EQUIPMENT

Breaker&Shear line proportional on Joystick with piping	●	●
Rotation line proportional on Joystick with piping	●	●
Flow adjustment for attachments	●	●
Double acting circuit for hydraulic quick coupler with piping		opt. opt.
Boom and arm load holding valves with overload indicator	opt.	opt.

WORKING LIGHTS

Lights - front (LED)	●	●
Lights - boom (LED)	●	●

UNDERCARRIAGE

Rubber tracks 300 mm	●	●
Steel tracks	opt.	opt.
Holes/loops for fixing	●	●

ENGINE

Diesel filter	●	●
Cage or storage for grease gun	●	●
Airfilter guard	●	●
Airfilter	●	●

HYDRAULIC SYSTEM

Swing brake	●	●
2 speed travel	●	●
Mainfilter	●	●
Hydr. Pre-pressure operating joysticks	●	●
Filter for pre-pressure circle	●	●

SY26U ● SY26U Canopy ●

The standard and special options differ depending on the country in which the mini excavator is delivered. If you have any questions, please contact your dealer directly.

A SERVICE YOU CAN RELY ON

Just as we do with our excavators, we also demand high quality and reliability of our service products. This underlines our equipment's performance in terms of their durability and their excellent price-performance ratio. After all, maintenance is crucial

for efficiency, cost-effectiveness and safety. Your SANY dealer is happy to help you with a comprehensive range of services to ensure that your machine continues operating efficiently in the long term.

Global Brand, Local Knowledge
Flexible, fast and always there for you

Rapid assistance, tailored advice, and a reliable supply of original parts all around New Zealand.



Our service network provides certainty that you are supported with services and parts wherever you are located around New Zealand.

The Vertu Difference

- + Site visits to get your machine back up and running as soon as possible.
- + Significant inventory of SANY genuine and after market parts and attachments.
- + Expert knowledge including SANY trained technicians.
- + If a repair cannot be undertaken on-site or in good time, Vertu will arrange a similar replacement while your machine is repaired under warranty.



Parts supply – quick and reliable

With the purchase of a SANY mini excavator you have made an investment in the future. Fast availability of spare parts is your guarantee of minimal downtimes and failure times.



Detailed information in black and white

Handbooks and documents are available for all SANY mini excavators, and these can help you with operation, maintenance, servicing and repairs. These include operating and maintenance instructions and technical specifications.



COMPACT POWERHOUSE FOR THE FINER DETAILS

Intricate tasks on construction sites in towns and cities or in horticulture and landscaping depend on manoeuvrability and precise control. This, combined with a great deal of power, makes the SY26U a high-quality powerhouse, and therefore a reliable partner for you.

ROBUST RELIABILITY

High-quality materials and careful machining guarantee the highest degree of solidity and stability even under stress.

ALWAYS COMFORTABLE

Whether with a cab or as a canopy – the cockpit is equipped with comprehensive comfort equipment, making it easy for the operator to maintain concentration throughout the day.

SMALL POWERHOUSE

Thanks to its compact design, the SY26U greatly simplifies working on confined construction sites. With its compact

dimensions, it offers the best conditions to be easily attached to a car trailer.

INHERENTLY SAFE

Maximum safety for drivers, the construction site environment and the machine itself is integrated on-board as standard. This means you can count not only on the protection of people and machines, but also on an optimum level of operational safety.

IMPROVED DETAILS

The extensive standard features and equipment with high-quality components from tried and tested brand manufacturers make the SY26U a reliable partner and the machine a universal marvel in virtually every application.

TECHNICAL HIGHLIGHTS COST EFFECTIVENESS AS A BENCHMARK

The smart control system adapts the pump power to the available engine power. For greater efficiency of the hydraulic system and reduced fuel consumption.

Rated power	15.2 kW / 2 500 rpm
Max. torque	65.6 Nm / 1 793 rpm
Max. travel speed	4.5 km/h
Swingspeed	10 rpm
Mainpump	Variable displ. axial piston pump
Max. oilflow	81 l/min
Engine	YANMAR 3TNV80F

Not all products are available in all markets. As part of our continuous improvement process, we reserve the right to modify specifications and designs without giving prior notice. The figures may contain additional options.

VERTU EQUIPMENT

510 Ellerslie-Panmure
Highway, Auckland 1060
Tel: 0800 837 888
info@vertuequipment.co.nz
www.vertuequipment.co.nz

SANY

Quality Changes The World

