



# READY FOR ANY TERRAIN

PRECISE POWER. CONSTANT RELIABILITY.

CONSTRUCTION MACHINERY



## MOBILE EXCAVATOR **SY155W**

Engine  
Isuzu 4HK1X

Rated Power  
120 kW / 2000 rpm

Bucket capacity  
0.7 m<sup>3</sup>

Operating weight  
13,500 kg



# SANY

SY155W

## For challenging tasks, you need a first-class partner

Quality comes from experience. And from new ideas. This is why we combine these two crucial factors at SANY. This is because we are one of the world's leading producers, having sold more than **320 000** excavators in **10 years**. This means that you can always rely on sophisticated products that have been tried and tested in practice. An impressive **5-7%** of our annual turnover is dedicated to research and development.

**320 000**  
EXCAVATORS SOLD IN  
**10 YEARS**

**5-7%**  
TURNOVER FOR RESEARCH  
AND DEVELOPMENT

Quality Changes the World

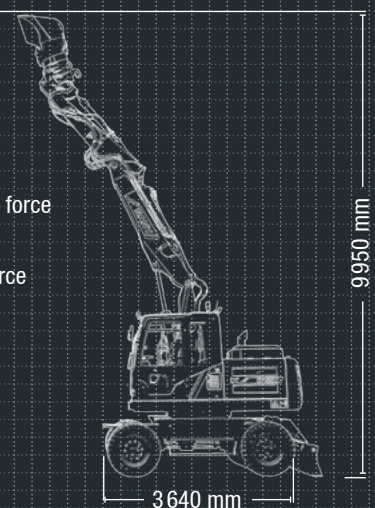
### SY155W HARD FACTS

Max. bucket digging force  
102.3kN(ISO)

Max. arm digging force  
75.2kN (ISO)

Swingspeed  
12.3 rpm

Max. travel speed  
37 km/h



## MOBILE VERSATILITY RE-DEFINED

When it comes to mobility, SANY SY155W is unrivalled, both on the construction site and over short distances from one construction site to the next. There is therefore no need for an additional means of transport, thereby eliminating loading time. This means that the mobile excavator

requires considerably less time and personnel. This is ideal for inner-city areas and a wide variety of applications, from civil engineering and earth moving to pipe laying. It can even demonstrate its strengths in garden- and landscaping work.





ECONOMY

# A MOBILE POWERHOUSE

When you need an excavator that can change locations quickly, the SY155W is the perfect choice. It lives up to its name as a mobile excavator – not only on the construction site when going from one task to the next, but also over short distances between two construction sites, meaning there is no need for an additional means of transport. This makes it ideally suited for use in urban areas, where it comes into its own thanks to its compact dimensions.

## QUALITY

**For the toughest conditions –** Pin point welded seams, executed by highly-precise welding robots, ensure stability and power in the long term.

## DIMENSIONS

**Extremely agile –** The adjustable boom enhances its flexibility and reach even with compact dimensions. Even when excavating vertically with attachments or workpieces, the excavator can work with particular precision in tight spaces.

## USER EXPERIENCE

**Comfortable all-round –** With its modern interior, the cab provides the best conditions for concentrated and productive work.



## SAFETY

**Protection for both people and machines –** From its stable, non-slip hand rails to its large mirrors and camera, the safety package ensures that your construction site runs without a hitch every day.

## COMPONENTS

**Inner values –** With the SY155W, quality is guaranteed right down to the fine details – from the ZF gearbox and the Bosch Rexroth hydraulics to the Isuzu engine.

## ECONOMY

**Price and performance –** The SY155W offers an impressive price-performance ratio that quickly pays off. On every construction site, the compact all-rounder shows what true cost-effectiveness looks like.



## DIMENSIONS

### Manoeuvrability and flexibility

The SY155W's adjustable boom broadens the scope of application and increases operational flexibility. This boom enables the work area to be adapted according to your requirements, from a longer distance to close up. It is now also possible to lift loads vertically in the immediate vicinity of adjoining buildings. Naturally, all transport dimensions have been maintained, so that the machine can move with road traffic easily and safely. In combination with its large steering angle, the machine can always be brought perfectly to its working position on the construction site.

## DIMENSIONS

### Stability in every situation

The robust undercarriage ensures stable driving and guarantees exact and fast manoeuvring on the construction site. Its stability and high-quality design allow it to prove its strength safely, for example during excavation work. Where necessary, the dozer blade provides additional stability. Naturally, the machine also has stabilisers on its axes, increasing the tilt stability even when working over the sides.







USER EXPERIENCE

**With built-in maintenance benefits**

We can't change the fact that machines need maintenance. That's why we've reduced maintenance requirements, resulting in less downtime. The maintenance-friendly overall concept of the SY155W starts with the robust, wide-opening engine bonnet and the easy accessibility of all relevant components. The filter, radiator and battery are arranged centrally and can therefore be accessed easily and quickly. This guarantees not only full performance and reliability, but also the long service life of all components.



USER EXPERIENCE

**A comfortable working environment**

The cabin of the SY155W has only one task – to make working on the construction site as pleasant, comfortable and safe as possible for the driver. The ergonomically positioned controls and the comfortable, air-suspension driver's seat with numerous individual adjustment options are part of this. The automatic climate control and powerful ventilation and heating ensure that the temperature and fresh air levels in the cab are always perfect. A radio and large storage compartments are also supplied on board as standard. Naturally, the direction of travel can be changed easily using a switch integrated into the joystick.

USER EXPERIENCE

**CONTROL  
FULL POWER  
WITH  
SENSITIVITY**

All of the important controls on the SY155W are positioned perfectly throughout the cab. From the easy to use joystick control to the large multifunction display, on which all important data is clearly laid out in a simple system. The menu navigation is extremely user-friendly and enables the driver to manage machine functions safely and comfortably, for example, checking current pressure levels. The monitor also displays the next inspection due and basic data such as oil and cooling water temperatures and torque. Changing attachment devices is particularly easy; the quick changeover can also be directly selected in the system. The angle of the steering column can also be comfortably adjusted.



**Our highlights – the added benefits SANY offers you:**

- + Adjustable boom
- + Comfortable air-suspension seat
- + Modern LED lighting
- + Clear instruments and a large, high-resolution colour display
- + High safety standards (support cylinders on the axes, camera etc.)
- + Large storage compartments



QUALITY

**Protecting all that's important to you**

The foundation of the SANY excavator's durability and robustness is its sophisticated design and selected high-quality materials. And, of course, its robust build. The welded seams, for instance, are executed by robots with a high degree of precision. This guarantees maximum load-bearing capacity and a long service life.

You can always rely on a clean, well thought-out hydraulic system.



SAFETY

**Everything within reach and in sight**

All the controls are clear and positioned directly within the driver's reach. This ensures not only optimum comfort, but also maximum safety thanks to precise operation. In addition, the driver has a complete overview of the working and slewing area in all situations. The cleverly built cab structure ensures this excellent overview, in conjunction with the camera supplied as standard.





## ENGINE

Model	Isuzu 4HK1X
Type	Water-cooled, 4 cylinder, with commonrail and Adblue
Exhaust emissions	Tier 3
Rated power	120kW / 2000 rpm
Max. torque	609 Nm / 1600 rpm
Displacement	5.193L
Batteries	2 × 12V / 120 Ah

## SERVICE REFILL CAPACITIES

Fuel tank	240L
Engine coolant	26 l
Engine oil	11.5 l
Adblue	20 l
Hydraulic oil tank	150L

## PERFORMANCE

Swingspeed	12.3rpm
Max. travel speed	High 37km/h, slow 10km/h
Max. travel force	84 kN
Gradeability	35°
Bucket capacity	0.7 m <sup>3</sup>
Groundpressure	0.38 / 0.55 kg/cm <sup>2</sup>
Bucket digging force ISO	102.3kN
Arm digging force ISO	75.2kN

## RELIEF VALVE SETTINGS

Implement circuit	340 bar
Swing circuit	255 bar
Travel circuit	360 bar
Pilot pressure	35 bar

## HYDRAULIC SYSTEM

Mainpump	1 x variable-piston-pump with loadsensing control
Max. oilflow	290 l/min
Max. oilflow (AUX 1)	100 l/min
Max. oilflow (AUX 2)	100 l/min
Travelmotor	Variable displacement axial piston motor
Swingmotor	Axial piston motor

## UNDER AND UPPER STRUCTURE

Boom length	1930 mm + 3100 mm
Arm length	2500 mm
Rotation device	Planetary gear reducer driven by an axial piston motor, automatic hydraulic released slewing brake

## OPERATING WEIGHT

SY155W*	13,500 kg
---------	-----------

\* Includes 75 kg (165 lb) operator and full fuel tank and excludes bucket.

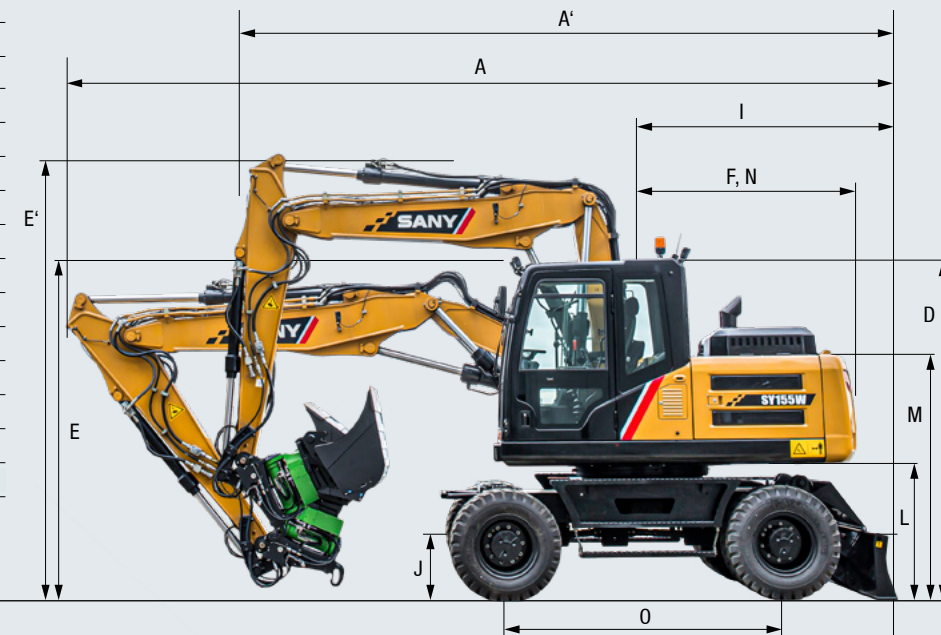
## Tyres

Dimensions	10.00 - 20 - 16PR
------------	-------------------



## DIMENSIONS

A Transport length	7690mm
B Transport width	2490mm
C Upperstructure width	2490mm
D Height over cab	3200 mm
E Transport height	3200 mm
F Tail length	2310mm
G Track gauge	1944 mm
H Undercarriage width (blade)	2490mm
I Horizontal distance to blade	2200 mm
J Blade height	515 mm
K Minimum ground clearance	360 mm
L Counterweight clearance	1230 mm
M Engine cover height	2616 mm
N Tail swing radius	2310mm
O Center distance of tumbler	2800mm



## LIFTING CAPACITIES OF LOWER DOZER BLADE

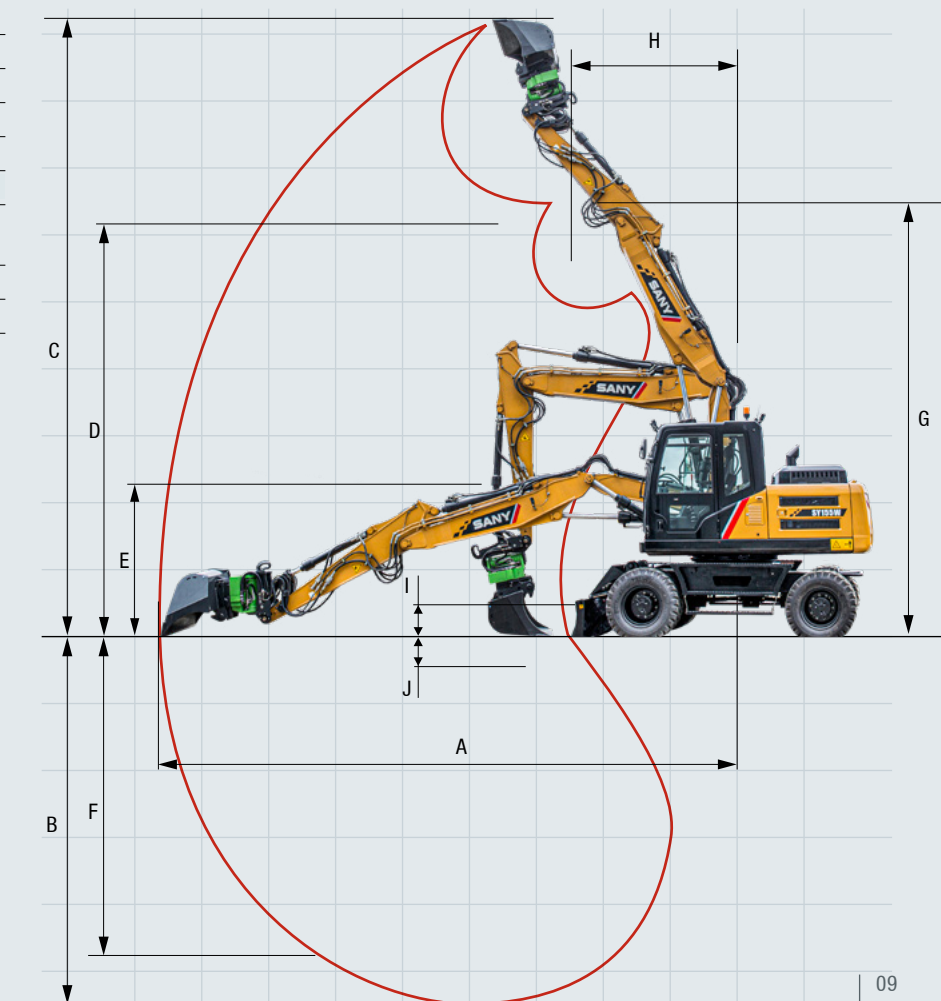
Load point height	Radius				Digging reach max. mm	
	3.0 m	4.5 m	6.0 m	7.5 m		
7,5 m kg	3600	3600			3500 3100 4952	
6,0 m kg	3400	3400	3500	2300	3300 2100 6327	
4,5 m kg	4000	3600	3600	2300	2800 1700 7121	
3,0 m kg	6700	6300	5000	3400	3600 2200 2500 1500	2500 1500 7526
1,5 m kg	9200	5800	5300	3100	3400 2100 2500 1500	2400 1400 7609
Ground line kg	9600	5400	5100	2900	3400 2000	2500 1500 7379
-1,5 m kg	9600	5400	5100	2900	3300 2000	2800 1700 6806
-3,0 m kg	8900	5700	5200	3000		

## LIFTING CAPACITIES OF UPPER DOZER BLADE

Load point height	Radius				Digging reach max. mm	
	3.0 m	4.5 m	6.0 m	7.5 m		
7,5 m kg	3600	3600			3400 3100 4952	
6,0 m kg	3400	3400	2500	2300	2300 2100 6327	
4,5 m kg	4000	3600	2500	2300	1800 1700 7121	
3,0 m kg	6700	6300	3700	3400	2500 2200 1700 1500	1600 1500 7526
1,5 m kg	6500	5800	3500	3100	2300 2100 1700 1500	1600 1400 7609
Ground line kg	6200	5400	3400	2900	2300 2000	1700 1500 7379
-1,5 m kg	6300	5400	3300	2900	2200 2000	1900 1700 6806
-3,0 m kg	6500	5700	3400	3000		

## OPERATING RANGE

A Max. digging reach	7750mm
B Max. digging depth	4800mm
C Max. digging height	8600mm
D Max. dumping height	6200mm
E Min. dumping height	2920 mm
F Max. vertical digging depth	4390mm
G Overall height over arm by Min. swing radius	7750mm
H Min. swing radius	2400mm
I Max. clearance when blade up	472 mm
J Max. depth of blade down	167 mm





**Ready for any challenge**

Its extensive standard equipment makes the SY155W a perfect partner to tackle everyday challenges on the construction site. Optional extra equipment and attachment devices are also available to increase its flexibility even more.



**OPERATORS COMFORT / CAB**

- Airsuspension seat ●
- Heater ●
- Automatic air conditioning C/H ●
- Radio and speaker ●
- Armrests (adjustable) ●
- 12v outlets ●
- AUX 1 on Joystick ●
- AUX 2 on Joystick ●
- Adjustable steering column ●

**WORKING EQUIPMENT**

- Boom and arm load holding valves with overload indicator ●
- Double acting circuit for hydraulic quick coupler with piping ●
- Hammer & Shear line proportional on Joystick with piping ●
- Rotation line proportional on Joystick with piping ●
- Flow adjustment for attachments ●
- Changeover of bucket cylinder prepared ●
- 2 piece - boom ●
- Dozer blade ●

**UNDERCARRIAGE**

- Holes/loops for fixing ●
- Toolbox ●

Standard equipment ● Special option ●

The standard and special options differ depending on the country in which the compact excavator is delivered. If you have any questions, please contact Vertu Equipment

**SAFETY**

- Battery master switch ●
- Travel Alarm ●
- Warning beacon ●
- Camera ●
- Lockable hoods ●

**WORKING LIGHTS**

- Lights - front (LED) ●
- Lights - boom (LED) ●
- Lights - platform (LED) ●
- Lights - back (LED) ●

**ENGINE**

- Auto idle ●
- DOC ●
- DPF ●
- Diesel filter ●

**HYDRAULIC SYSTEM**

- Axle stabilizers ●
- pipng for additional hydraulic function AUX 1 ●
- pipng for additional hydraulic function AUX 2 ●
- Swing brake ●
- Mainfilter ●

# A SERVICE YOU CAN RELY ON

In the event of a breakdown during your warranty period, Vertu will come to your site as soon as possible to get your machine back up and running. If the repair cannot be undertaken on-site or in good time, Vertu will arrange a similar replacement while your machine is repaired under warranty.

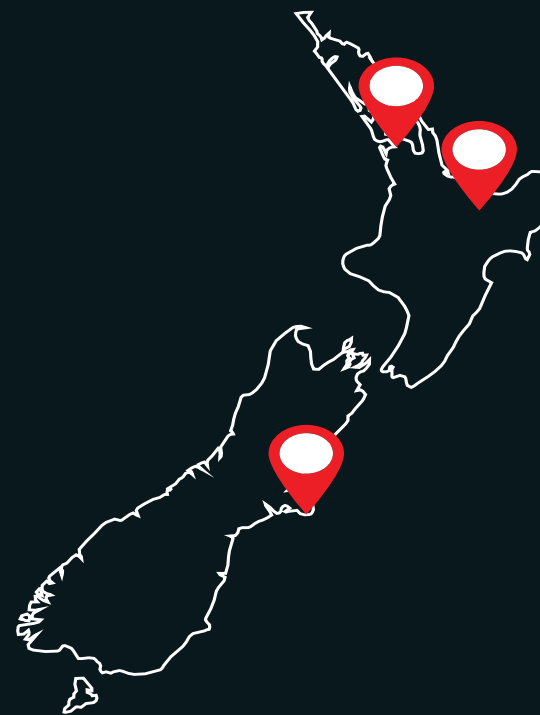
**National Service Representative**

Our national service network partnerships provide certainty that you are supported with service and parts, wherever you are located.



Flexible, fast and always there for you

Paid assistance, tailored advice and a reliable supply of original parts all around New Zealand. That is what we mean by premium service.



**Parts and Inventory**

As the dealer of SANY excavators, roading and construction equipment, Vertu holds a significant inventory of SANY genuine and aftermarket parts and attachments, both in New Zealand and Australia to keep you going. With direct relationships locally and internationally, we can source parts quickly and as a matter of priority.



**The added benefits SANY offers you:**

- + Fast supply thanks to the New Zealand Vertu locations
- + More than 15,000 spare parts to make your machine highly reliable
- + Expert knowledge for optimal supply for your machine
- + Thanks to SANY's special training programme, our technicians are always kept up to date so that they can face all technical challenges



**Parts supply – quick and reliable**

With the purchase of a SANY mobile excavator you have made an investment in the future. Fast availability of spare parts is your guarantee of minimal downtimes and failure times.



**Detailed information in black and white**

Handbooks and documents are available for all SANY mobile excavators, and these can help you with operation, maintenance, servicing and repairs. These include operating and maintenance instructions and technical specifications.





# ENHANCED MOBILITY FOR YOUR PRODUCTIVITY

The SY155W demonstrates how strong performance can take to the road reliably and safely. The compact mobile excavator is an all-rounder boasting exemplary productivity. During civil engineering, horticulture and landscaping work and on urban construction sites, it proves itself to be a flexible workhorse anywhere, working not only with strength but also precision. The sensitive joystick control and the adjustable boom, as well as the well-coordinated brand-name components also have their part to play in this.

## ROBUST AND DURABLE

Robustness is essential for tough everyday conditions on the construction site. You can therefore put your trust in the **high quality** of all the components of the SY155W mobile excavator. And in **SANY's five-year warranty**.

## COMFORTABLE WORKSTATION

**Ergonomics and functionality** determine every detail of the SY155W's driver's cab. The perfect workstation to re-define productivity.

## COMPREHENSIVE PROTECTION

With the SY155W, you are investing in safety in every possible way. Besides the **ROPS/FOPS certification**, the comprehensive **safety package also includes support cylinders on the axes** and a **camera**.

## AGILE POWER

**Compact dimensions**, on the one hand, exemplary **mobility** and **flexibility** on the other. The **compact dimensions** and the **adjustable boom** make it possible.

## HIGH-QUALITY TRIED AND TESTED

The **true power** of a machine can only be seen in the sum of its components. This is why the SY155W features **tried and tested components** from leading manufacturers.

## ECONOMICALLY EFFICIENT

The SY155W pays for itself right from the first use, thanks to its **excellent price-performance ratio**, and beyond, due to its extremely **low energy consumption levels**. The intelligent hydraulic system, for example, ensures the highest possible **fuel efficiency**.

## TECHNICAL HIGHLIGHTS

Engine	Isuzu 4HK1X
Rated power	120kW/2000rpm
Max. torque	609 Nm / 1 600 rpm
Max. travel speed	37km/h
Swingspeed	12.3
Mainpump	Variable-piston-pump with loadsensing control
Max. oilflow	290 l/min

Not all products are available in all markets. As part of our continuous improvement process, we reserve the right to modify specifications and designs without giving prior notice. The figures may contain additional options.

# SANY

Vertu Equipment  
0800 837 888  
info@vertuequipment.co.nz

Auckland  
510 Ellerslie-Panmure Hwy  
Mount Wellington

Tauranga  
23a Hewletts Ave  
Mount Maunganui

Christchurch  
52 Hickory Place, Islington

