



HIGH PERFORMANCE INCLUDED

PRODUCTIVITY. SAFETY. COST EFFECTIVENESS.

CONSTRUCTION MACHINERY



CRAWLER EXCAVATOR

SY550HD | SY500H

Engine
Isuzu 6WG1
Rated power
300kW/1800rpm
Bucket capacity
2.5-3.1m³
Operating mass
51,200kg
49,500kg

SANY

For challenging tasks, you need a first-class partner

Quality comes from experience. And from new ideas. This is why we combine these two crucial factors at SANY. This is because we are one of the world's leading producers, having sold more than **320 000** excavators in **10 years**. This means that you can always rely on sophisticated products that have been tried and tested in practice. An impressive **5–7%** of our annual turnover is dedicated to research and development. This is why we give you not only our word, but also our extraordinary **five-year warranty** as a guarantee of how powerful and robust our products are.

320 000
EXCAVATORS SOLD IN
10 YEARS

5–7%
TURNOVER FOR RESEARCH
AND DEVELOPMENT

**FOUR YEAR
WARRANTY***

Quality Changes the World

* Applicable in certain markets, please check with your local dealer.



SY500H

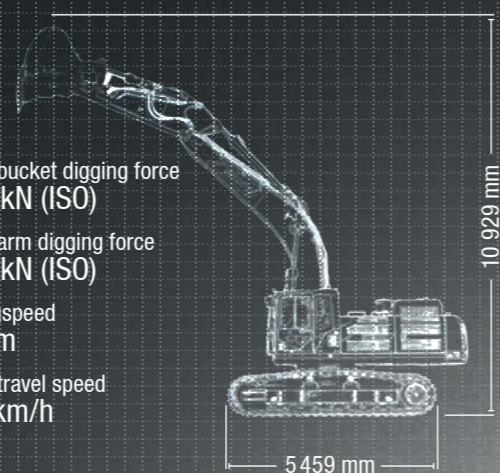
SY500H HARD FACTS

Max. bucket digging force
253 kN (ISO)

Max. arm digging force
227 kN (ISO)

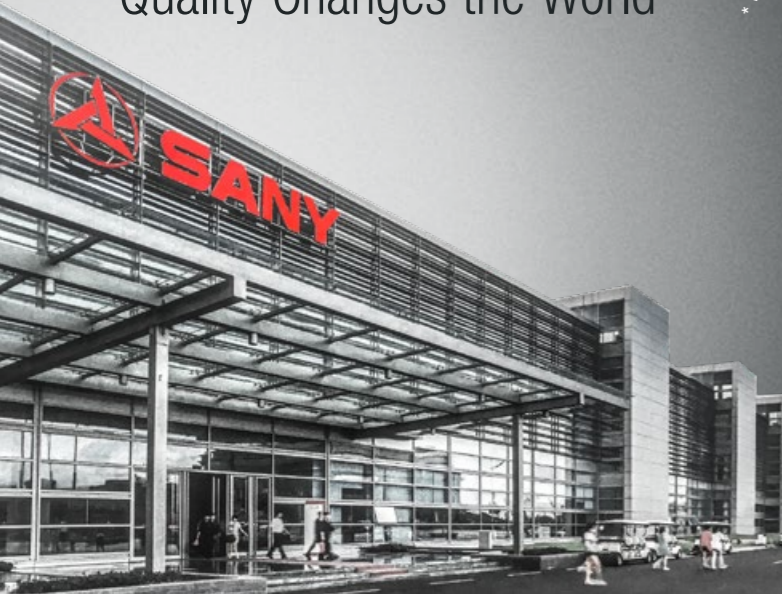
Swingspeed
8 rpm

Max. travel speed
5.4 km/h



GETS THE JOB DONE

The SANY SY500H was developed to complete large, challenging tasks quickly and reliably. Wherever a great deal of material must be moved in a short time period, it is the perfect choice. With its even balance of power and precision, it is just the right workhorse for cost-oriented use on the construction site. On every large construction site, it gives the guarantee that extensive earth moving projects can be carried out profitably within short time periods. It is optimally equipped for tough use in harsh environments – with a stable undercarriage, high stability across all components and a powerful transmission.



TOP PROPERTIES

QUALITY

EXTREMELY TOUGH

Whether used for extraction in a stone or gravel quarry – these machines are in great demand wherever large amounts of material must be moved. As a robust power machine, the SY500H meets expectations with regards to quality and durability, for example, with its high-quality steel and precise and meticulously computer-controlled welded seams. Or with its safety valves, which are 100% reliable in the worst-case scenario.

SY500H

DIMENSIONS

Improved stability, increased transferable force

The SY500H features an extremely stable and robust frame. The large stand space provides the basis for the driver to work safely and precisely, even on uneven ground, and offers the best standing properties – meaning power can be used optimally.



Absolute reliability – for peace of mind!

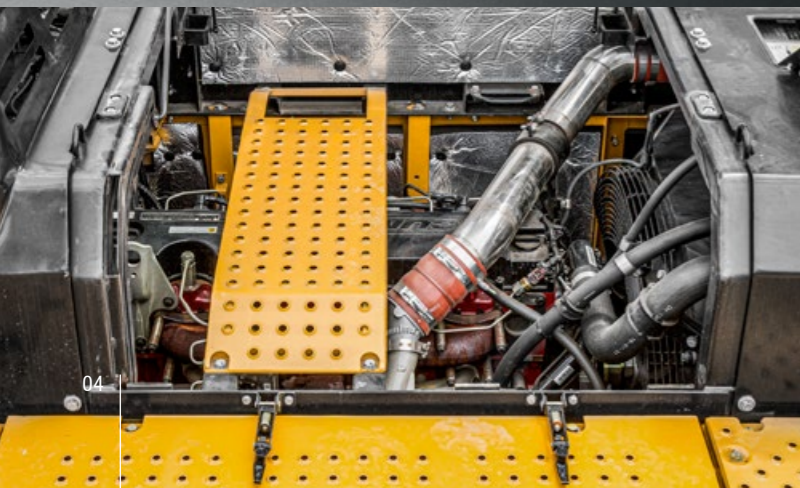
SANY's four-year/8000hr warranty* gives you the assurance that you can fully count on your equipment.

* With participating partners

COMPONENTS

Maximum power, maximum productivity

The large-volume Cummings engine delivers the required power at all times. This also saves time and money on the construction site. And the perfect harmony of hydraulics, engine and equipment guarantees a high level of fuel efficiency and productivity.



QUALITY

For the toughest conditions – gets down to work and takes it all in its stride – from the bottom up, the SY500H is designed to deliver high performance, even in the toughest conditions. Made for the long term.

SAFETY

Totally safe – In addition to the extensively glazed driver's cab, the standard rear camera guarantees excellent visibility on all sides with no blind spots. The reinforced cab structure in accordance with ROPS/FOPS specifications ensures a safe work environment for the machine operator.

COMPONENTS

A true power package – with its almost 16-litre displacement, the Isuzu engine is the foundation of high productivity. The high torque in the low engine speed range delivers superior performance whilst at the same time guaranteeing low fuel consumption.

DIMENSIONS

Stable basis – the robust undercarriage is designed down to the last detail to provide the highest levels of stability and reliability. Even under the toughest working conditions, the high-quality construction guarantees continuous operating hours and a long service life.

USER EXPERIENCE

Productivity centre – power is nothing without control. This is why the spacious, comfortable driver's cab is designed so that all the controls convenient to reach and the displays are easy to read.

ECONOMY

Always the right power – digging, loading, moving... Every task makes special demands of the machine. With the intelligent choice of working modes, the components of the SY500H can always be adjusted optimally with regards to fuel consumption and performance.



USER EXPERIENCE

ERGONOMIC CAB AS A PRODUCTION FACTOR

The driver's cab in the SY500H attracts special attention. It combines the safety and ergonomics factors, offering the driver the best conditions for relaxed and fatigue-free work. The focus here is on the comfortable, heated, air-suspension driver's seat with high backrest that provides lumbar support and the easily accessible controls.

The joystick control allows for precise work in any situation and the large, easy-to-read display shows all of the key parameters clearly at a glance. The powerful heating and the automatic air-conditioning system guarantee the ideal climate. Also provided on-board as standard: Radio and 12 V jack, plenty of stowage space and storage options.



ECONOMY

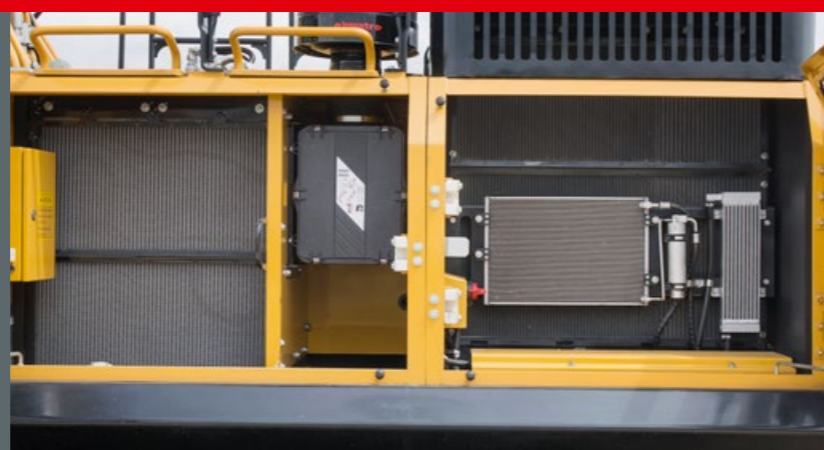
Productivity at the touch of a button

An optimal balance between performance and fuel efficiency can easily be achieved with the preselectable work modes – for every task. This prevents a reduction in the engine speed and performance, as well as uneconomically high engine speeds. It ensures fast, efficient work. And protects the components, extending the service life.



Our highlights – the added benefits SANY offers you:

- + Comfortable driver's cab
- + Total safety package, including camera
- + Air-suspension driver's seat
- + Powerful, large-volume engine
- + Heating and automatic air conditioning system



USER EXPERIENCE

The large cover reveals everything you need

Service and maintenance are essential for maintaining performance and productivity. This doesn't mean, however, that these tasks must be time-consuming. The powerful engine of the SY500H is therefore easily accessible, positioned under the large engine bonnet on the superstructure. This means all engine parts required for service

and maintenance can be accessed quickly and safely. All other components that must be regularly checked and serviced are easily accessible via large maintenance covers. This makes maintenance and service quick and easy, saves operating costs and increases machine availability.

ECONOMY

MOVING MORE

You can rely on the water-cooled six-cylinder engine with common rail injection in every respect. It scores highly with exemplary values not only when it comes to reliability and performance, but also when it comes to consumption. Lower fuel consumption thanks to the latest SCR emissions technology reduces not only ongoing operating costs but also emissions. The two variable displacement axial piston pumps also guarantee a maximum flow of 360 l twice per minute. The power of the hydraulic pump is thereby always automatically adjusted to the actual energy that is required.



ENGINE	SY550HD	SY500H
Model	Isuzu 6WG1	Isuzu 6WG1
Rated power	300kW/1800rpm	300kW/1800rpm
Max. torque	1950Nm/1400rpm	1932Nm/1400rpm
Displacement	15.681 L	15.681 L
Batteries	2 × 12 V / 200 Ah	2 × 12 V / 200 Ah

HYDRAULIC SYSTEM	SY550HD	SY500H
Main pump	2 x variable piston pump with electronic positive control	
Max. oil flow	2 × 360 l/min	
Travel motor	Variable displacement axial piston motor	
Swing motor	Axial-piston motor	

RELIEF VALVE	SY550HD	SY500H
Implement circuit	343 bar	343 bar
Power boost	373 bar	373 bar
Swing circuit	269 bar	269 bar
Travel circuit	343 bar	343 bar
Pilot pressure	39 bar	39 bar

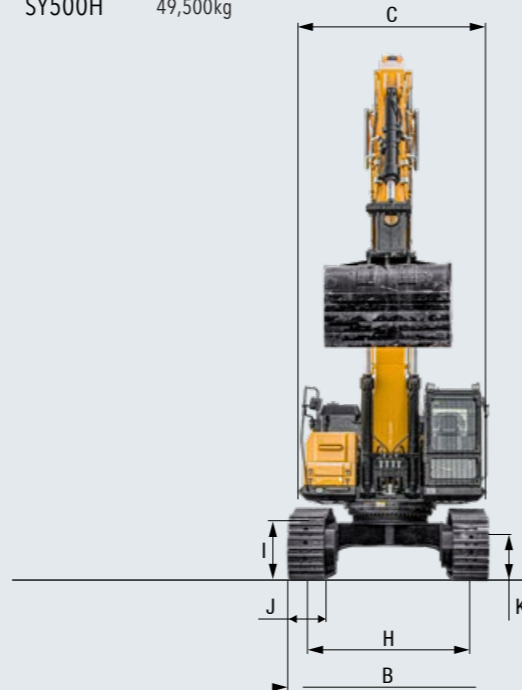
SERVICE REFILL	SY550HD	SY500H
Fuel tank	680 l	680 l
Engine coolant	49.19 l	49.19 l
Engine oil	50 l	50 l
Drive (per side)	15 l	15 l
Hydraulic oil tank	480 l	480 l

PERFORMANCE	SY550HD	SY500H
Swing speed	8 rpm	8 rpm
Max. travel speed	High 5.4 km/h, slow 3.1 km/h	
Max. travel force	320 kN	339 kN
Bucket capacity	3.1 m³	2.5 m³
Ground pressure	87.1 kPa	75.3 kPa
Gradeability	35°	35°
Bucket digging force ISO	270 kN	287 kN
Arm digging force ISO	244 kN	245 kN

UNDER AND UPPER STRUCTURE	SY550HD	SY500H
Boom length	7 000 mm	7 000 mm
Arm length	2800 mm	3000 mm
Bottom rollers	9	9
Top rollers	2	2
Rotation device	Planetary gear reducer driven by an axial piston motor, automatic hydraulic released slewing brake	

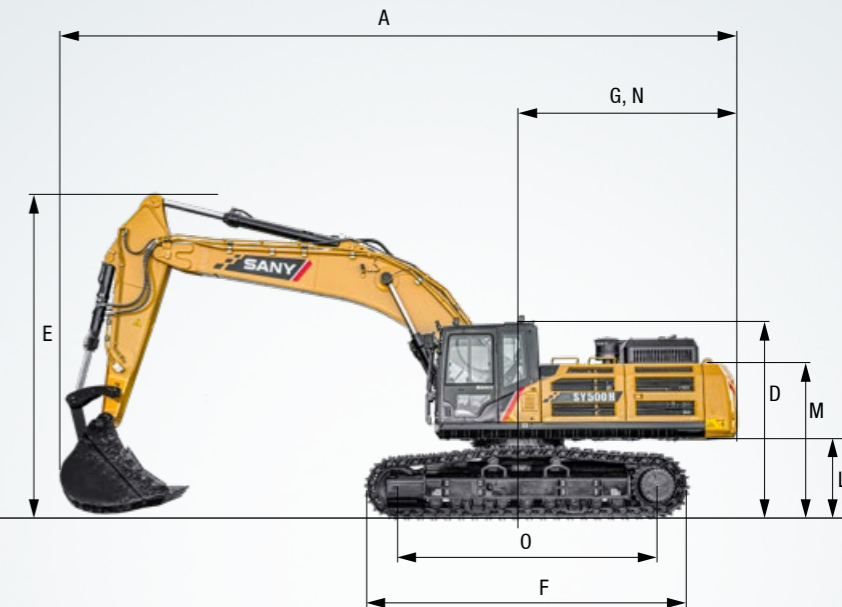
OPERATING MASS

SY550HD	51,200kg
SY500H	49,500kg



DIMENSIONS

	SY550HD	SY500H
A Transport length	12300 mm	12280 mm
B Transport width	3470 mm	3470 mm
C Upperstructure carriage	3290 mm	3290 mm
D Height over cabin/ROPS	3476 mm	3476 mm
E Height of Boom – transport	3600 mm	3600 mm
F Overall length of crawler	5440 mm	5440 mm
G Tail length	3765 mm	3538 mm
H Track gauge	2740 mm	2740 mm
I Track height	1220 mm	1220 mm
J Track pads width	600 mm	600 mm
K Min. ground clearance	560 mm	560 mm
L Counterweight clearance	1355 mm	1355 mm
M Engine cover height	3160 mm	3160 mm
N Tail swing radius	3765 mm	3838 mm
O Center distance of tumbler	4412 mm	4415 mm

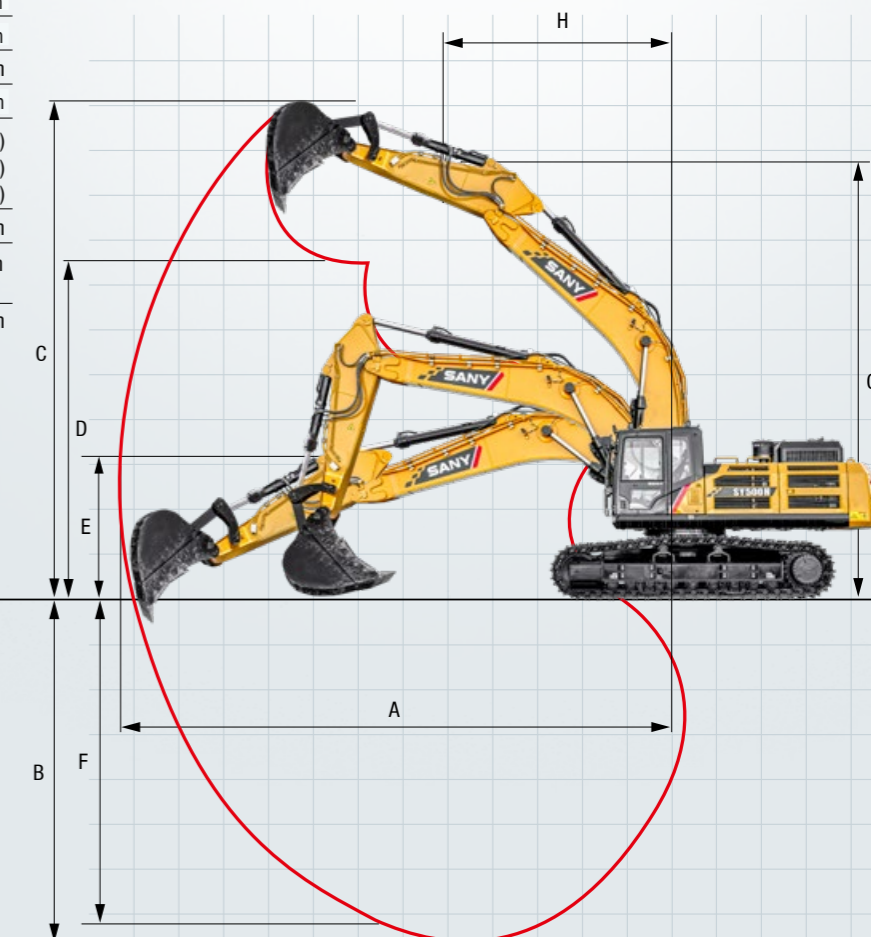


LIFTING CAPACITIES

Load point height	Radius				
	3.0m	4.5m	6.0m	7.5m	9m
6.0 m kg			11055	11055	10587 8042
4.5 m kg		18642 18642	14279 14279	12192 10338	11087 7843
3.0 m kg		23570 19988	16675 16435	13511 9852	11791 7588
1.5 m kg		16257 16257	18626 12724	14705 9433	12473 7354
Ground kg		20366 20366	19732 12327	15515 9153	12928 7194
-1.5 m kg	15054 15 054	26578 18598	19928 12202	15750 9040	12900 7155
-3.0 m kg	25395 25395	24999 18849	19161 12298	15157 9108	
-4.5 m kg	29297 29297	22004 22004	17031 12629	12794 9465	

WORKING AREA

A Max. digging reach	11489 mm	11860 mm
B Max. digging depth	7255 mm	7490 mm
C Max. digging height	10929 mm	10929 mm
D Max. dumping height	7255 mm	7450 mm
E Min. dumping height	2833 mm (3350 mm ARM)	3181 mm (3000 mm ARM)
		2350 mm (3900 mm ARM)
F Max. vertical digging depth	6278 mm	6 278 mm
G Overall height over arm by min. swing radius	9109mm	9 100 mm
H Min. swing radius	5216mm	5 240 mm



*Wider undercarriage with 800 mm track pads width

Complete powerhouse

The SY500H does not just impress with its performance. When it comes to equipment, this machine is in the top class. Everything you would expect from an excavator in the 50--tonne class is included on-board as standard.



OPERATORS COMFORT / CABINE

- Heater ●
- Automatic air conditioning C/H* ●
- Radio and speaker ●
- Armrests (adjustable) ●
- Airsuspension seat ●
- Heated seat ●
- Wiper ●
- Sprayer f. wiper ●
- AUX 1 on Joystick ●

- Removable front-window ●
- Sky light openable ●
- Integrated cooling box ●

WORKING EQUIPMENT

- Boom and arm load holding valves with overload indicator ●
- Double acting circuit for hydraulic quick coupler with piping ●
- Breaker&Shear line proportional on Joystick with piping ●
- Rotation line proportional on Joystick with piping ●
- Flow adjustment for attachments ●

UNDERCARRIAGE

- Steel tracks 600 ●
- Holes/loops for fixing ●

ARBEITSBELEUCHTUNG

- Lights – front (LED) ●
- Lights – boom (LED) ●
- Lights – platform (LED) ●

ENGINE

- Auto idle ●
- Diesel filter ●
- DOC ●

HYDRAULIC SYSTEM

- Swing brake ●
- 2 speed travel ●
- Piping for additional hydraulic function AUX 1 ●

- Hydr. Pre-pressure operating joysticks ●
- Mainfilter ●

SAFETY

- Battery master switch ●
- Travel Alarm ●
- Warning beacon ●
- Camera ●
- Handrails ●
- Lockable hoods ●
- Lockablge fuel cap ●

Standard equipment ● Special option ●

The standard and special options differ depending on the country in which the crawler excavator is delivered. If you have any questions, please contact your dealer directly.
* The air conditioner contains fluorinated greenhouse gases: Refrigerant type: HFC-134a, Global warming potential: 1 430, Quantity: 0,9 kg, CO₂e: 1,29 t

A SERVICE YOU CAN RELY ON

In the event of a breakdown during your warranty period, Vertu will come to your site as soon as possible to get your machine back up and running. If the repair cannot be undertaken on-site or in good time, Vertu will arrange a similar replacement while your machine is repaired under warranty

National Service Representation

Our national service network partnerships provide certainty that you are supported with service and parts, wherever you are located.

Parts and Inventory

As the dealer of SANY excavators, roading and construction equipment Vertu holds a significant inventory of SANY Genuine and aftermarket parts and attachments, both in New Zealand and Australia to keep you going. With direct relationships locally and internationally we can source parts quickly and as a matter of priority.



Flexible, Fast and Always there for you

Paid assistance, tailored advice and a reliable supply of original parts all around New Zealand That is what we mean by premium service



Fast supply thanks to the New Zealand Vertu Locations

More than 15,000 spare parts to make your machine highly reliable

Expert knowledge for optimal supply for your machine

Thanks to SANY's special training programme, our dealers are always kept up-to-date so that they can face all technical challenges.

Parts supply – quick and reliable

With the purchase of a SANY crawler excavator you have made an investment in the future. Fast availability of spare parts is your guarantee of minimal downtimes and failure times.



Detailed information in black and white

Handbooks and documents are available for all SANY crawler excavators, and these can help you with operation, maintenance, servicing and repairs. These include operating and maintenance instructions and technical specifications.



HIGHLIGHTS **SY500HD**



DELIVERS HIGH PERFORMANCE

Cost-effectiveness is an easy calculation – maximum productivity at minimal cost. In this way, the SY500H is a real maths genius. It impresses with its efficient operation, in other words, its high performance and low fuel consumption. Durability and low investment costs. Availability and fewer maintenance requirements.

FOR THE TOUGHEST CONDITIONS

The SY500H is built to deliver maximum performance reliably, even in difficult places. It does this boldly, thanks to its **robust construction** and **high-quality welded seams**. Also a sign of superior stability and durability: The **well thought-out hydraulic system**.

STABLE BASIS

Stability isn't everything. But without it, there can be nothing. Therefore, the undercarriage is built to be **particularly stable**.

PRODUCTIVITY CENTRE

For concentrated, low-fatigue work, the driver's cab is equipped to be particularly **spacious** and **comfortable**. Included here is exemplary **protection against sound and vibration**.

COMPREHENSIVE PROTECTION

Safety begins at the point of entry – with **stable hand rails** and **anti-slip tread surfaces**. Further features in the safety package: **Best visibility on all sides, camera and safety valves**.

A TRUE POWER PACKAGE

Efficient productivity in its greatest form – the **large-volume Isuzu engine** leaves no doubt that even the largest tasks can be completed quickly and safely. Its proven **common rail technology** delivers an exemplary **high torque**, allowing for economical use of the fuel.

ALWAYS THE RIGHT POWER

Efficiency has many faces when it comes to the SY500H: A **high-performance engine**, which holds back impressively with regards to consumption. The intelligent **choice of working modes** for optimal engine power at all times. An **efficient, powerful hydraulic system**. This keeps operating costs to a minimum and contributes to the savings effect.

TECHNICAL HIGHLIGHTS

Engine	Isuzu 6WG1
Rated power	300kW/1800rpm
Max. torque	1950Nm/1400rpm
Max. travel speed	5.4 km/h
Swingspeed	8 rpm
Mainpump	2 x variable-piston-pump with electronic positive control
Max. oilflow	2 x 360 l/min



" A MACHINE THAT HAS WHAT IT TAKES!"

Not all products are available in all markets. As part of our continuous improvement process, we reserve the right to modify specifications and designs without giving prior notice. The figures may contain additional options.



Vertu Equipment
0800 837 888
www.vertuequipment.co.nz
info@vertuequipment.co.nz

Auckland
510 Ellerslie-Panmure Hwy
Mount Wellington

Tauranga
67 Hull Road
Mount Maunganui

Christchurch
52 Hickory Place,
Islington

